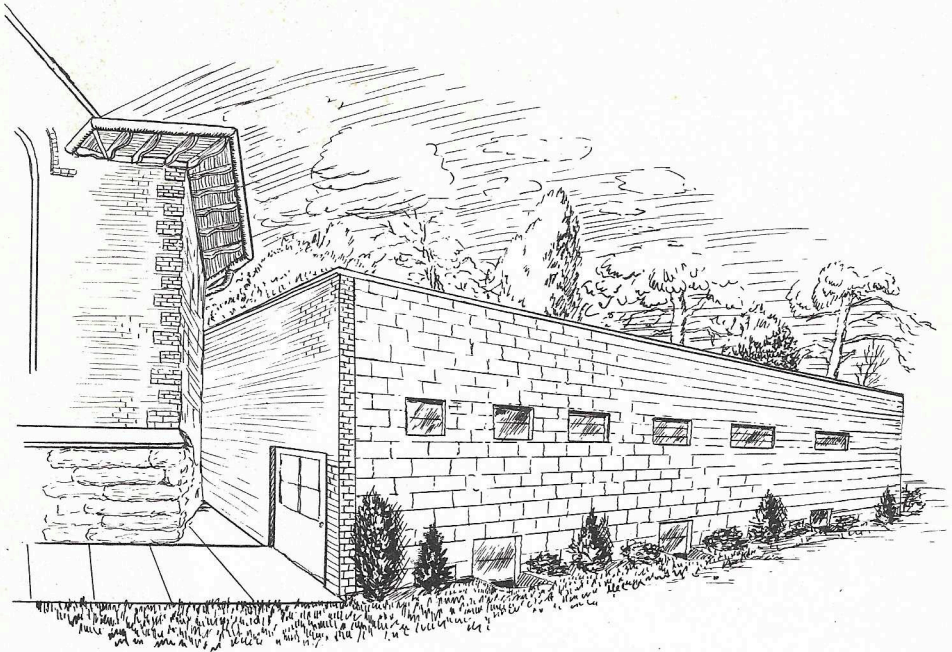


Growing Thru Giving

for

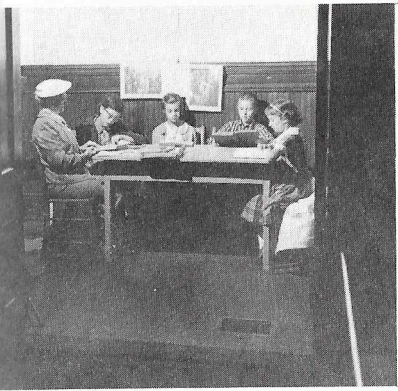
THE PROPOSED EDUCATIONAL AND FELLOWSHIP BUILDING



THE FIRST BAPTIST CHURCH

Delaware, Ohio

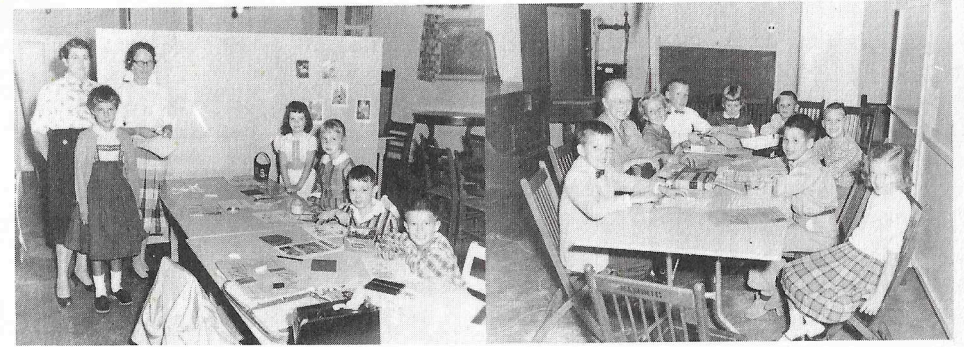
"Views of Our Present Facilities"



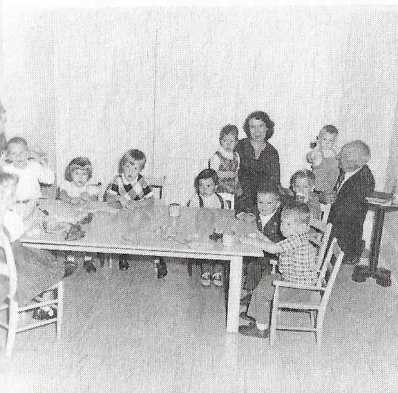
JUNIORS IN SOUTH VESTIBULE



THE KINDERGARTEN DEPARTMENT



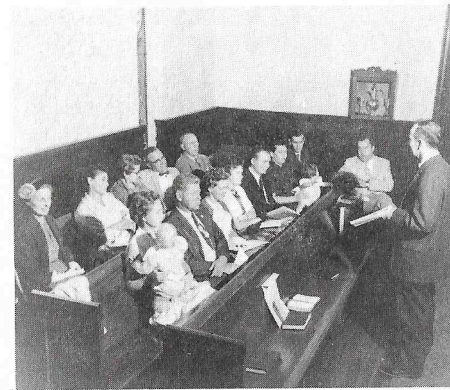
THE PRIMARY DEPARTMENT IN THE BASEMENT



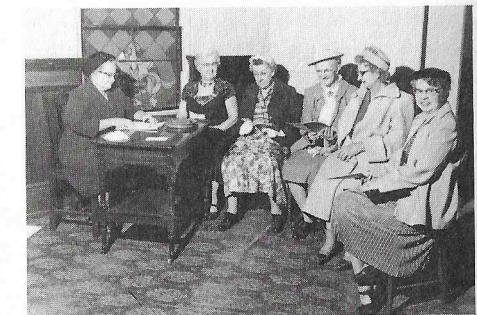
THE NURSERY DEPARTMENT



GENERAL ASSEMBLY OF
THE CHURCH SCHOOL



ADULT CLASS IN REAR OF SANCTUARY



WHATEVER CLASS

FACTS TO PONDER	
Number of present classes	14
Number of present classrooms . .	7
Enrollment	130

For Our Children of Today, and Tomorrow, WE BUILD!

OUR NEEDS

Acts 1:8 says "*and you shall be my witnesses in Jerusalem and in all Judea and Samaria and to the end of the earth.*" Are not the people of Delaware our Jerusalem, and the children of the First Baptist Church our most important concern in "Jerusalem"?

During the Year of Baptist Achievement, 1954, and again in 1957 when a representative of our denomination came to evaluate our Sunday Church School, we were brought face to face with our many shortcomings. Since then, we have made great strides in improving our physical plant. The gas heaters were eliminated and rooms made more useable by the installation of a new furnace. A tile floor, pretty wallpaper, paint and gayer drapes helped a good deal but our needs cannot be remedied by small improvements. We need SPACE!

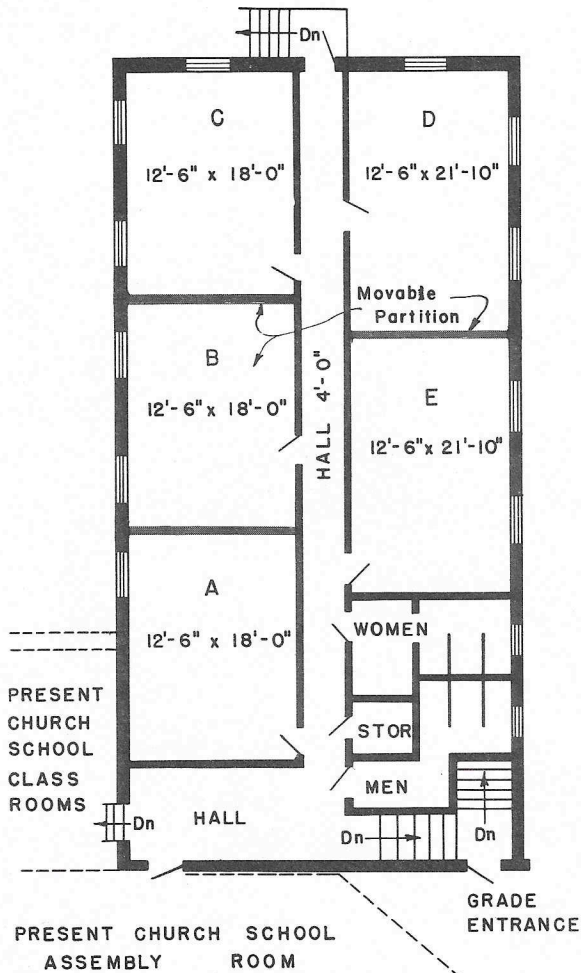
For instance, Nursery and Kindergarten children need space for a worship center, a place to sit on the floor and listen to stories and play, a work table for handwork and the inevitable storage space for supplies, coats, hats, boots, etc. It is unfair to the teacher, the pupil and ultimately to Our Lord to spend precious teaching time moving furniture and shifting supplies. At this age there should be a minimum of 30 square feet of space per child. By this standard we can only accomodate four children per class! Praise God, we have two and three times that many. It is easy to see the handicap under which the children learn.

We believe that God is light and brightness. Our primary classes need to be lifted out of the dampness and darkness of the basement into rooms that will be an expression of that belief. The Junior Department needs a place where they can meet together, to worship and sing and share, as well as table space where each class can learn and work as a class. At present, one class meets in the south vestibule, while the other meets in the shadow of a fire hazard in the belfry. Our Junior Highs need bulletin board space, project space, storage space. The Senior Highs need the special rapport which comes in meeting face to face in a room of their own, instead of in pews in the choir loft.

Our adult classes could be made more comfortable, too. And we are failing many of our young families in that we do not have a real crib room.

I have not mentioned the quieter space for our secretary, the better facilities for choir rehearsal, dinners or large meetings, nor the fine restrooms, which we need so badly. The plan you see on the facing page was thought out carefully and worked out over a long period of time to fill the needs I have stated above, so that when we "witness in our Jerusalem", we will be doing it in the best way we know how.

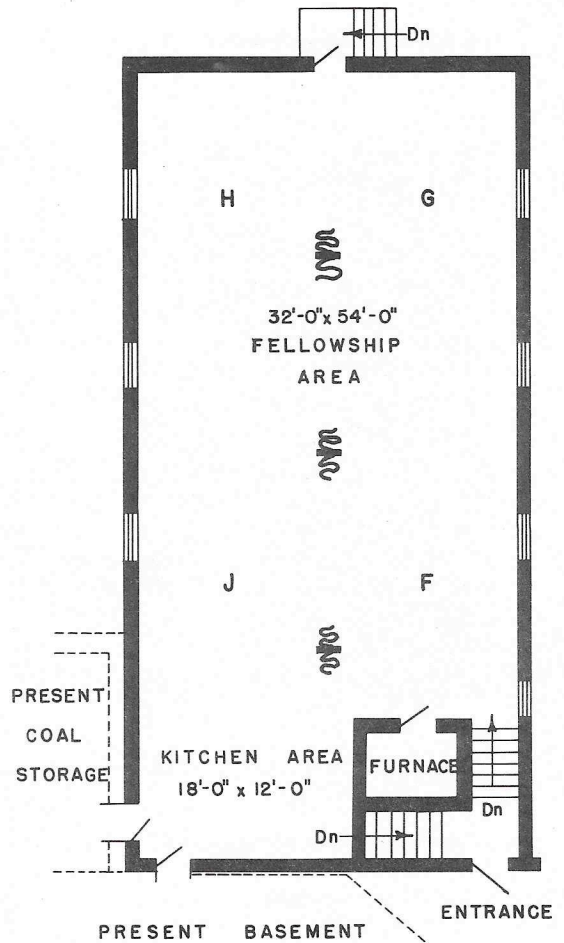
W. C. Wickum,
Chairman,
Christian Board of Education



SECOND FLOOR PLAN

SECOND FLOOR – 2100 Sq. Ft.
Ceiling Height – 9 Feet

- A. First Year Primary
- B. Second Year Primary
- C. Third Year Primary
- D. Second Year Kindergarten
- E. First Year Kindergarten

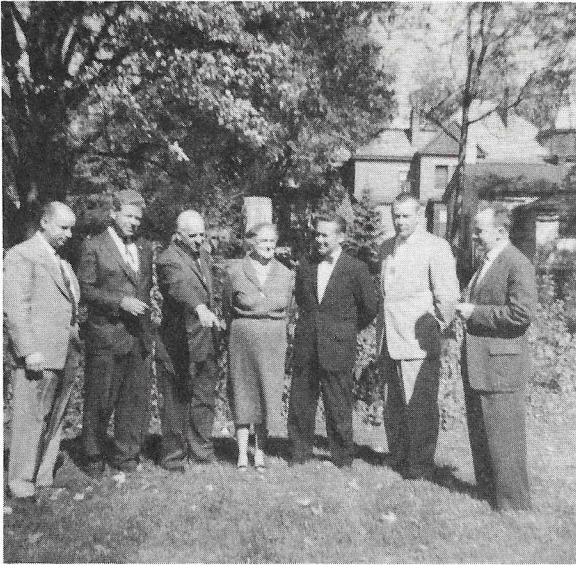


FIRST FLOOR PLAN

FIRST FLOOR – 2100 Sq. Ft.
Ceiling Height – 9 Feet

- F. Junior Highs
- G. First Year Juniors
- H. Second Year Juniors
- J. Third Year Juniors
- F, G, H, J. Fellowship Hall

THE COMMITTEE ANSWERS.....



Question: What is the size of the building?

Answer: The outside dimensions are 32 feet by 66 feet.

Question: How many floors will there be in the proposed building?

Answer: Two floors. The first floor will be approximately 4 feet below the present ground level. The second floor will be on the same level as the present Church School Assembly room.

Question: Why are we having a flat roof?

Answer: The flat roof makes for simple construction of additional floors at a future date as needed.

Question: When will actual construction begin?

Answer: Construction will begin in the Spring of 1960.

Question: How complete will this building be for \$24,000?

Answer: This will cover basic construction except for interior decoration and finishing.

Question: What will need to be added to complete the facilities?

Answer: Kitchen equipment, bulletin boards, classroom storage space, and furnishings to the interior; a brick veneer to the exterior.

Question: Are the plans for this addition final?

Answer: No. Final plans will not be completed until the amount of money available is determined – the amount you and others are willing to give.

Question: Will there be a kitchen and dining room?

Answer: Yes, space is planned for new kitchen equipment to be added after the basic construction costs are met. The ground floor class space has been designed to also serve as a dining hall and fellowship area.

Question: Is this pledge to be paid in addition to my present one to the Current and Benevolent Funds?

Answer: Yes, you are expected to maintain or increase your present level of giving to these funds.

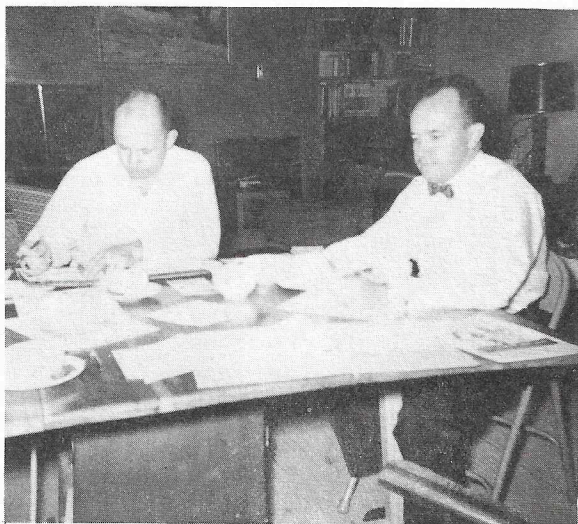
MESSAGES

You have seen, from information in this brochure, the need for additional space in our Church is very real and very urgent.

We have surveyed our resources and analyzed the results carefully. We have concluded that it is within our means to provide the needed facilities.

It is estimated that the basic structure needed will cost \$24,000. It is desirable to provide this money within 3 years, or at a rate of \$8,000 per year.

We believe the goals we have set are realistic and practical. We know they are demanding, but we know also that through the faith and determination shown thus far in the Campaign the Challenge can be met.



As you consider the extent of your participation in this building program, be counseled by these words of Scripture from Luke 6:38 "... give, and it will be given to you, good measure, pressed down, shaken together, running over, will be put in your lap. For the measure you give will be the measure you get back."

James Van Brimmer
James Van Brimmer
Contemporaneous Canvass Chm.

"Growing thru giving." Do we really know what this means?

Of course it means that we can have our needed new building if we want it enough; that the Church grows in proportion to our willingness to share.

But there is more to it than that. Jesus said, "*give, and it will be given to you.*" This is a law of the abundant life. As we respond to the needs of others, as we create new opportunities for fellowship and learning, we discover something happening in our own lives. A transformation begins, new blessings come to us, "*good measure, running over.*"

Our building program is an open door of opportunity - to a richer future for our children, to a new and abundant life for you.

James B. Stephenson
James B. Stephenson
Pastor

WHY THESE INCREASED FACILITIES?

WHY should the First Baptist Church of Delaware build an Education and Fellowship Unit?

When a child outgrows his clothes, there is only one thing to do – buy him some new ones. Well, *this* our child, our Church School, has long outgrown its clothes. It is fairly bursting at the seams and threadbare to boot. Truly something must be done, and soon.

Nursery, kindergarten, primary, all have grown far beyond the cramped limits of their quarters. We lose children and would lose many more were it not for the devoted teachers who carry on a wonderful work with inadequate means in inadequate space.

And how many we lose as our children grow older! Again there are only dedicated teachers to hold them, and that is not enough. These young folk are the life-blood of the Church. Its future lies with them. Moreover, we owe them the best Christian Teaching and Training possible. Our children have a right to adequate and pleasant surroundings, not only for Christian Teaching, but for wholesome recreation and for many activities which provide Christian Training and Experience.

Do we care for our Church? Do we care for our children? Then let us not fear to undertake this needed work. The Church has not taken a real forward step for fifty years. Here is our opportunity to do something for the Kingdom – and we CAN do it if we WILL.

Miss Laura Wagner
Charles Eliot
Co-Chairmen of Building Committee

“LET ALL THAT YOU DO BE DONE IN LOVE”